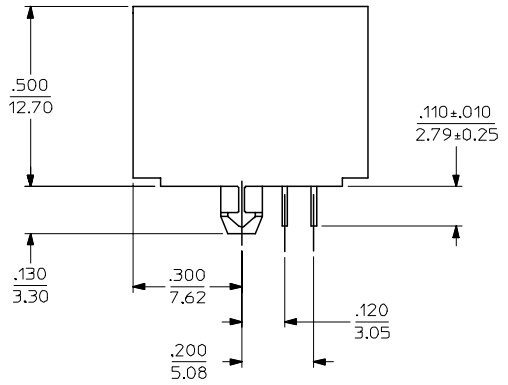
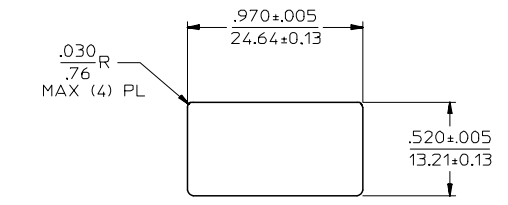
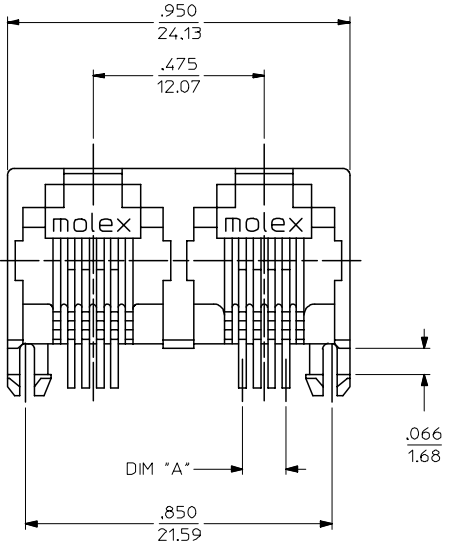
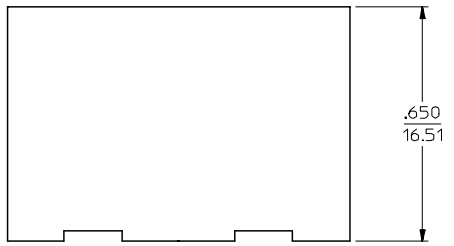


P.C. BOARD LAYOUT
 6 LOADED 6 ASSEMBLY
 COMPONENT SIDE OF BOARD
 SCALE: 2X

P.C. BOARD LAYOUT
 6 LOADED 4 ASSEMBLY
 COMPONENT SIDE OF BOARD
 SCALE: 2X

P.C. BOARD LAYOUT
 6 LOADED 2 ASSEMBLY
 COMPONENT SIDE OF BOARD
 SCALE: 2X



2	F1
1	F2
SHT	REV

MATERIAL NUMBER	CIRCUITS PER PORT	DIM "A"
438146621	6	.200/5.08
438146421	4	.120/3.05
438146221	2	.040/1.02

ADD PCB THICKNESS FC NO: UCP2008-0143 DRAWN: JBELL CHKD: LSHMI DT APPR: FSM TH	2007/07/24 2007/07/30 2007/08/01	QUALITY SYMBOLS ▽=0 ▽=0
--	--	-------------------------------

GENERAL TOLERANCES (UNLESS SPECIFIED)	
mm	INCH
4 PLACES ±---	±---
3 PLACES ±---	±---
2 PLACES ±---	±---
1 PLACE ±---	±---
ANGULAR ±1/2°	

DIMENSION STYLE	
IN/MM	
DRAWN BY	DATE
CHECKED BY	DATE
APPROVED BY	DATE
MATERIAL NO.	DOCUMENT NO.

SCALE	DESIGN UNITS	THIRD ANGLE PROJECTION
---	INCH	⊙
INVERTED DUAL PORT RIGHT ANGLE MODULAR JACK ASSEMBLY		
molex MOLEX INCORPORATED		
SEE CHART	SD-43814-001	SHEET NO. 1 OF 2
DRAFT WHERE APPLICABLE MUST REMAIN WITHIN DIMENSIONS		
THIS DRAWING CONTAINS INFORMATION THAT IS PROPRIETARY TO MOLEX INCORPORATED AND SHOULD NOT BE USED WITHOUT WRITTEN PERMISSION		